



MultiSeis Programmes Ltd

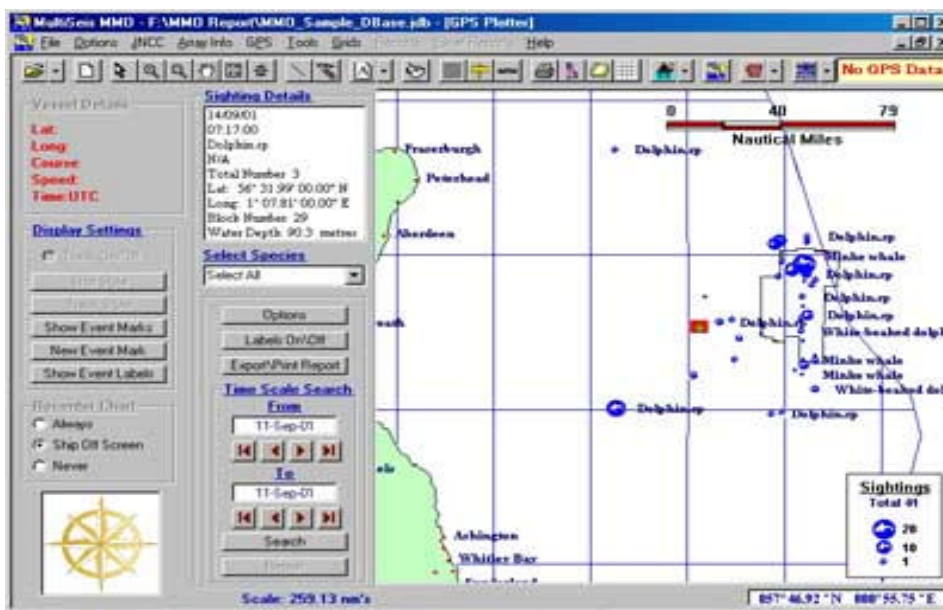
MultiSeis MMO
Datasheet

26th November 2002

MultiSeis MMO

**Almost Certainly The Most Advanced Marine Mammal
Logging / Reporting System for the Seismic Industry.**

MultiSeis MMO is a database orientated solution for the creation of reports and information for statistical analysis. Based on the standard JNCC Marine Mammal Reporting Forms it reduces the administrative effort required to record basic operation data.



Plotter without GPS connection showing North Sea with Block Grid, Scale Bar, Sightings Legend and Individual Sighting Details.

OVERVIEW

MultiSeis MMO organises Sightings, Operations, Effort and Weather observations on marine seismic surveys in a database format for reporting and statistical analysis. View sightings, prospects, oil installations, UKCS Grid instantly on screen along with vessel position and track if GPS enabled.

UNIQUE FEATURES

MultiSeis MMO's diverse functions allow the user to create a unique picture of the survey.

General Information – Allows input for general information of Survey, Vessel, Client, Contractor, and MMO

Survey Information – Allows for the entry of more general survey information along with automatically calculating things like **Total Number of Sightings**, **Total Mammals Seen**, **Total Species Seen**, **Number of Sightings in Prospect Area**, **Total Time Guns Firing**, **Total Time Spent Watching**.

Prospect Information – Allows the entry of prospect diagram plus two prospect locations in Lat / Long format. These are also plotted to an electronic chart.

Features

- GPS Link up if required
- Microsoft Access compatible
- Easy integration into one large database
- Rapid presentation via Graphs, Reports, Maps and Summary's
- Report export in (.xls), (.rtf), (.pdf), (.html), (.txt) and (.tiff) formats



<http://www.multiseis.com/>

Vessel Information – Allows the entry of information / picture for Seismic, Undershoot and Chase Vessel

JNCC Section – Allows the entry of Record of Sighting, Location and Effort and Record of Operations

Survey Weather – With data taken from the Location and Effort section, graphs can be produced for wind, sea swell and visibility

Summary – Automatically completes details such as Sightings per Hour, Number of Sightings, Mammals per Hour, Sightings per Block etc.

Weekly Summary – Can calculate the same information as the **Summary** screen but between two specific dates.

Report Writer – Use to write sections of the Final Report, sections include

Introduction, Soft Start Procedures, Observation Methods, Survey Coverage, Marine Mammal Sightings, Discussion, Compliance with Guidelines, Problems, Recommendations, References and Acknowledgements.

Weekly Report – Weekly Reports can be written and stored in the database, sections include **Operations, Observations, Weather Conditions and Other Observations.**

Airgun Information – Use to enter Airgun Array information along with diagram

Soft Start Graph – Allows the user to compile a graph of the soft start build up.

GPS Status – If GPS enabled, status can be checked on screen.

Plotter – Allows the user to view sightings, prospect area, oil installations instantly on screen along with vessel position and track if GPS enabled.

Quick View Tables (Grids) –

- **Effort** – shows all effort related data in spread sheet format.
- **Operations** - shows all operational related data in spread sheet format.
- **Sightings** - shows all sighting related data in spread sheet format.
- **Effort/Sightings/Ops** - shows all three categories in spread sheet format by date selection.

Tools – A selection of tools are available which include:-

Beaufort Wind Scale Calculator
Co-Ordinate Converter
Calendar
Daylight Times
Distance Estimator
Forecast Areas
UKCS Block Locator

SYSTEM REQUIREMENTS

Windows 95, 98, ME, XP, NT v 4.0 2000. At least 30mb available disc space not including data maps and 32 mb RAM.

FOR MORE INFORMATION

Call MultiSeis Programmes Ltd at

.
+44 (0) 1779 478427
+44 (0) 1502 500872
email info@multiseis.com
or visit us at www.multiseis.com